



FEVER DETECTION SOLUTIONS

GETTING AMERICA READY FOR WORK

FEVER NON CONTACT THERMAL IMAGING

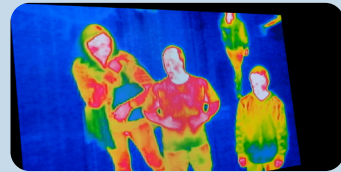
Thermal imaging cameras mounted at building/parking entrances, floor/office suite entrances and essential/sensitive spaces can analyze temperatures of people and send the information to the appropriate team members for necessary action. It enables you to identify individuals with a fever - an indicating symptom of COVID-19 - efficiently and effectively – without making direct body contact, minimizing the risk of cross-contamination.

FEVER VERIFY

Once an elevated body temperature is detected on the device, it is important to follow up with secondary protocol by using an FDA approved disposable oral thermometer to verify the actual core body temperature and whether the original reading on the thermal scanning device is verified.

FEVER PRE-CHECK

Our technology allows employees, students, customers and fans to take their temp on their own and sync the results to access systems like employee and school badges, tickets, reservations. Within seconds of signing in, the mobile application will automatically read your temperature is immediately sent to your employer, venue, and/or event with a timestamp. Your readings will auto sync with your badge, ticket and reservations, where you can scan your unique code and directly go through.



SMART SOLUTION FOR A POST COVID-19 WORLD

CONTACT US | 1 866-607-6405 | covid19@ostglobal.com